

COMMISH KIT® STAND-UP DRAFT BOARD

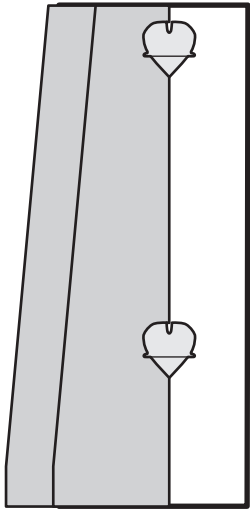
No Assembly Required... Unfold, Lock, Draft.



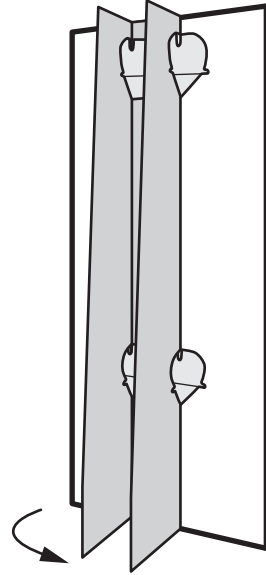
WWW.COMMISHKIT.COM

Your **Commish Kit**® Stand-Up draft board comes folded.

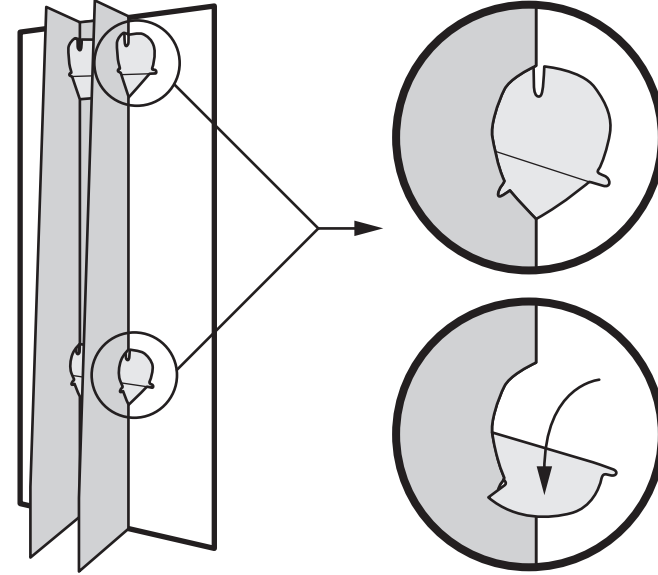
To set up your draft board, follow these instructions:



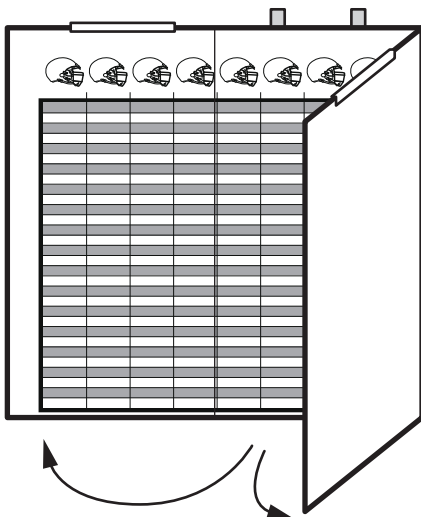
1. Fold the two long stands so they're perpendicular to the board.



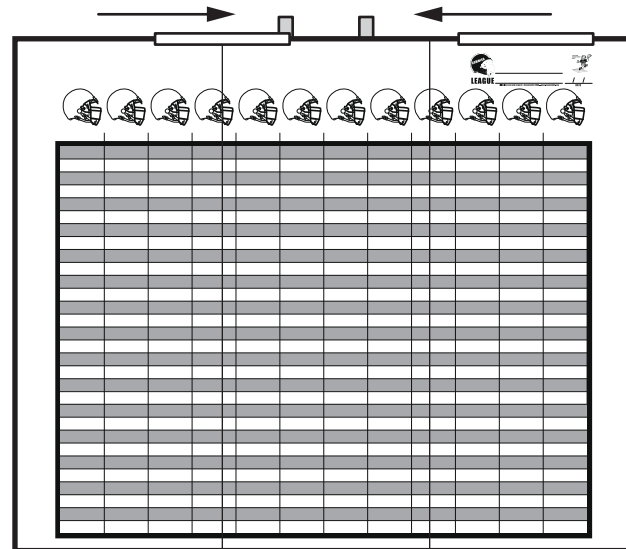
2. Fold the two stand braces downward until they lock with the stands.



3. Turn the draft board around and fold out both sides so you can see the Teams/Rounds grid.



4. Slide the plastic spines so they cover the seam where the Teams/Rounds grid was folded.



5. Start drafting!

